



R5: Cabin Elevations & Design

Restful Refuge Retreat

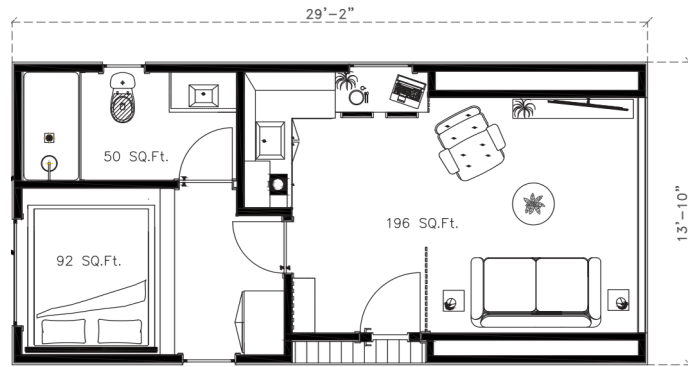
Location: Mount Tremper, Town of Shandaken, NY

SBL 25.11-1-22.311 (5305 Rt 212 Mt. Tremper)

TECHNICAL SPECIFICATIONS

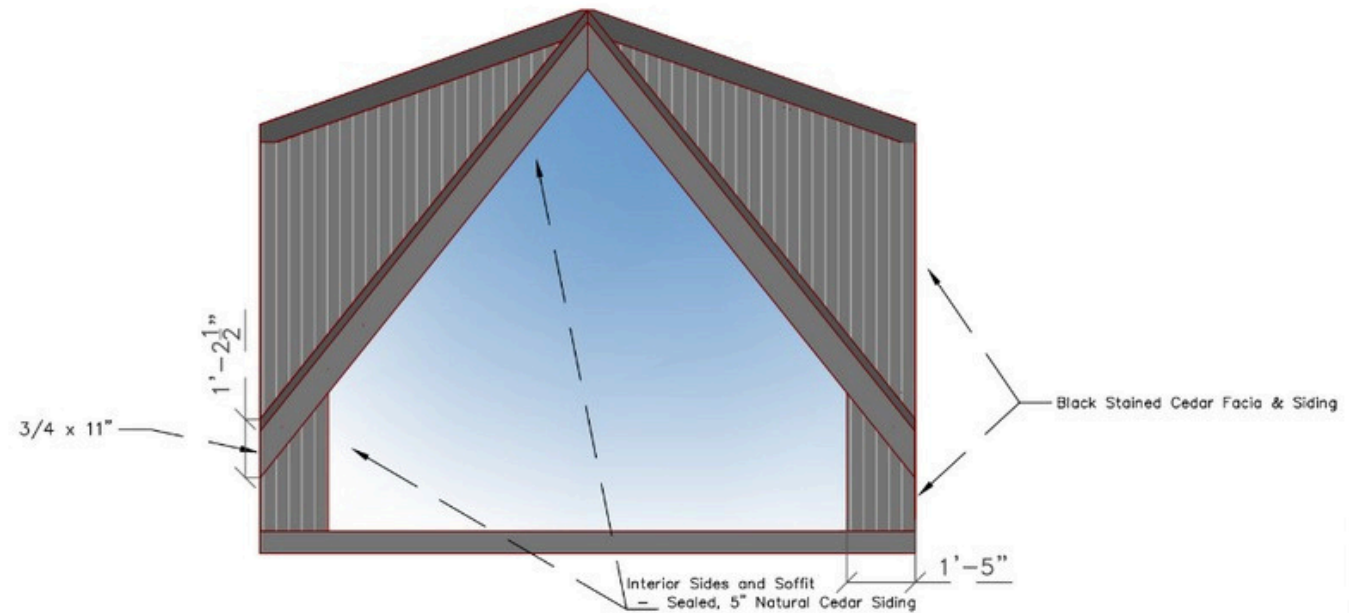
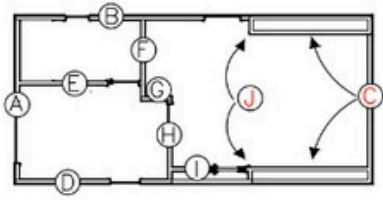


• 400 FINISHED SQ.FT. • 1 BEDROOM • 1 BATHROOM



EXTERIOR

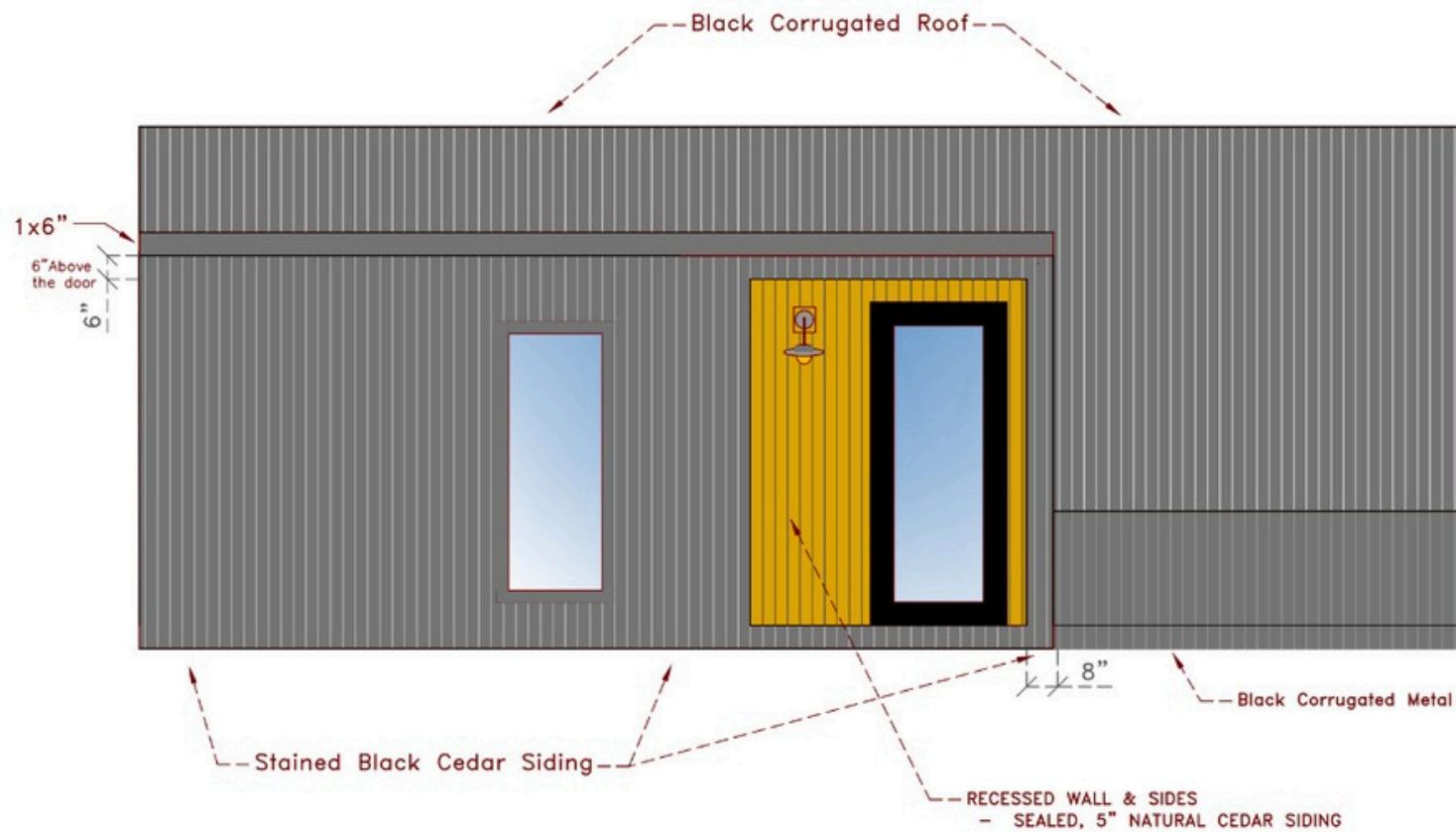
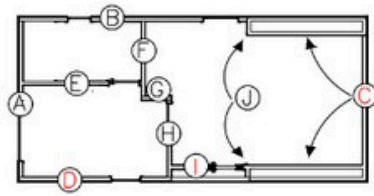
- Maximum overall building height (measured from finished grade to roof peak, including foundation): approximately 18.5 feet
- Matte black corrugated metal siding & roof • 2x6 roof trusses 24" on center, 7/16" OSB sheathing & roof underlayment



Any unauthorised use, reproduction, or distribution of these plans, whether in whole or in part, is expressly prohibited without prior written consent.

COPYRIGHT

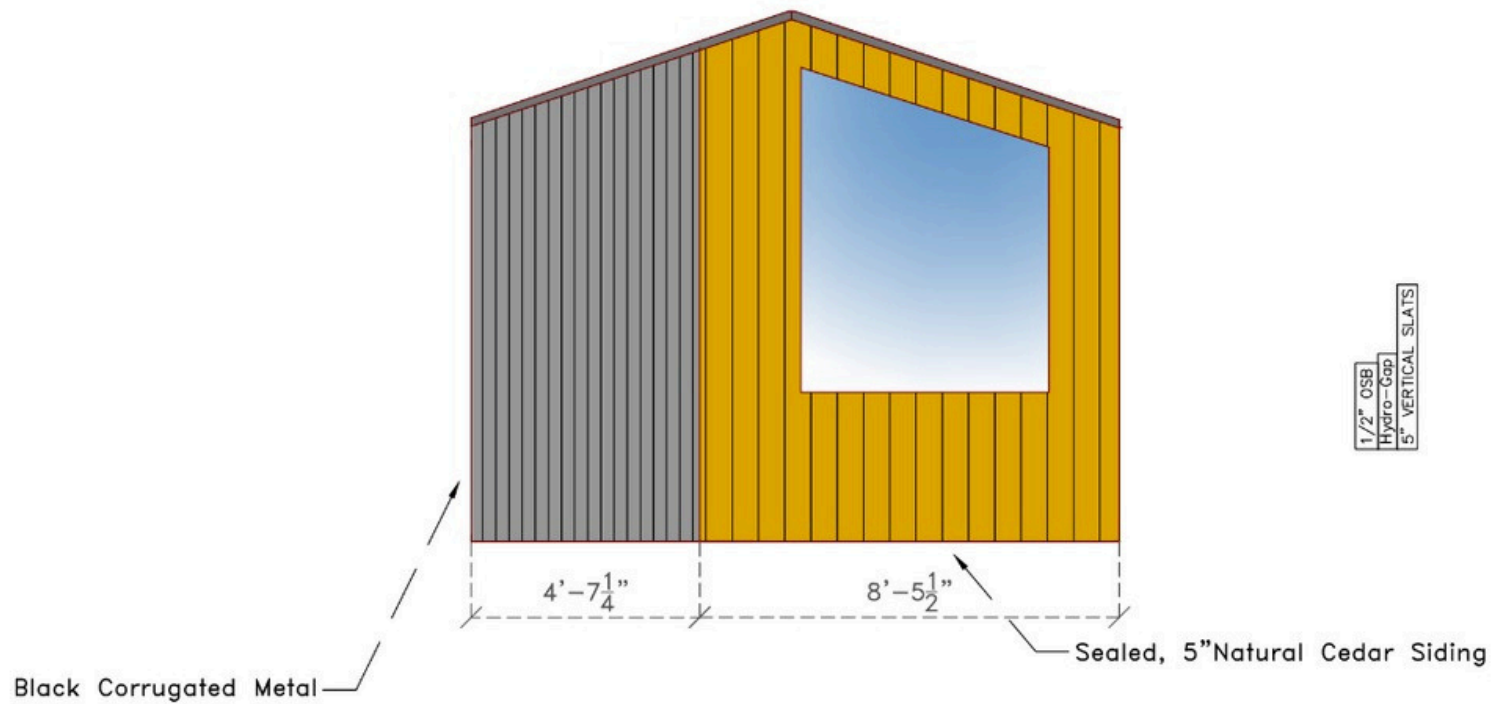
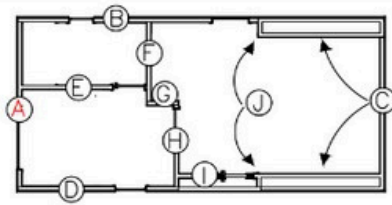
A Frame Elevations Side 1



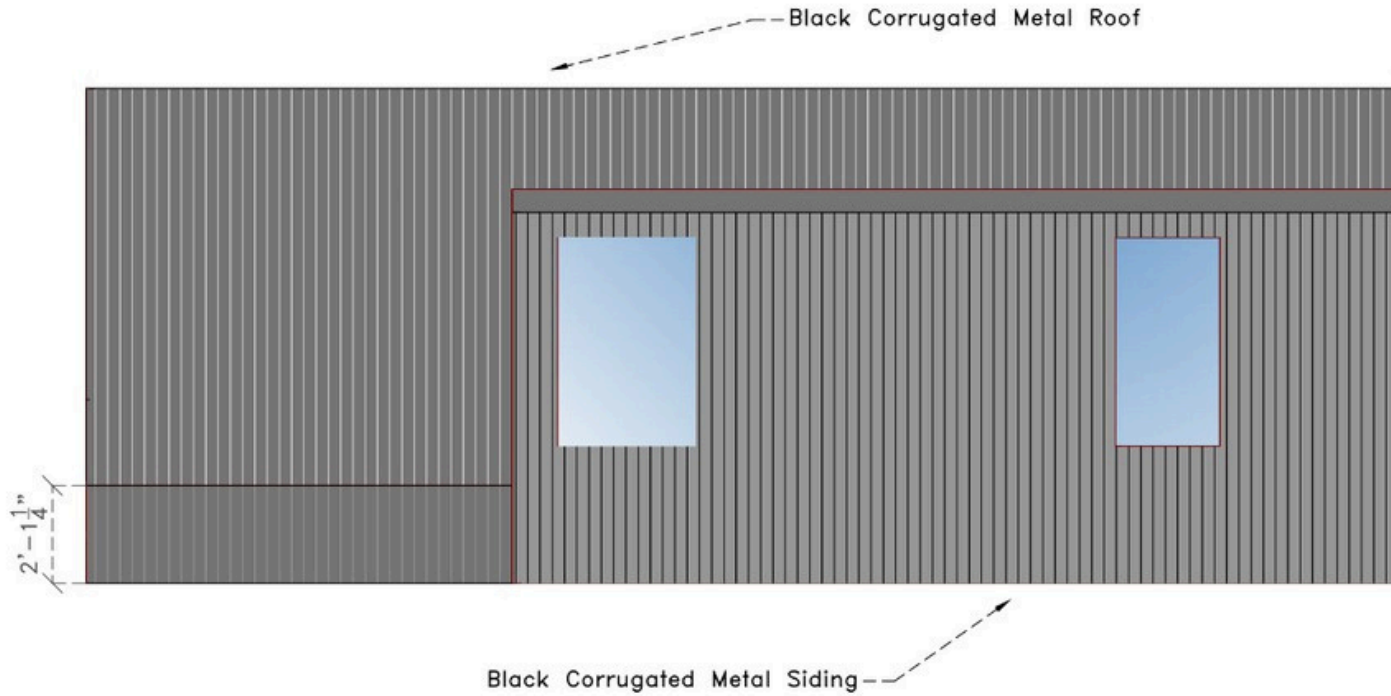
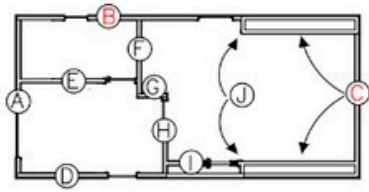
Any unauthorised use, reproduction, or distribution of these plans, whether in whole or in part, is expressly prohibited without prior written consent.

COPYRIGHT 2024

A Frame Elevations Side 2



A Frame Elevations Side 3



Any unauthorized use, reproduction, or distribution of these plans, whether whole or in part, is expressly prohibited without prior written consent.

COPYRIGHT 20

A Frame Elevations Side 4



Foundation Design – Reference Image

Illustrative example only. Final foundations will be lower in height than shown and designed to minimize visual impact.